

40 Years of the Future: WINDOWS

Exhibition Parameters

The following information and images are intended to communicate the exhibition parameters of the window spaces. Castlefield Gallery currently has New Art Spaces at the following locations:

New Art Spaces Chester

Former Topshop in Grosvenor Shopping Centre,
11 - 17 Paddock Row, Chester CH1 1ED

New Art Spaces Warrington

Former M&S, Golden Square Shopping Centre
Leigh Street, Warrington, WA1 1UZ

For more information about Castlefield Gallery New Art Spaces click here

www.castlefieldgallery.co.uk/artist-development/castlefield-gallery-new-art-spaces/

Please note these spaces were not all designed for the purpose of exhibiting art work. In places, they contain awkward architectural features that depending on the proposed work may need to be considered. We have attempted to communicate this below and will work with the selected artist to help support install challenges where we can. For further information please contact: ryan@castlefieldgallery.co.uk.

Please note: The window spaces at Castlefield Gallery New Art Spaces are not invigilated, they can not accommodate artwork that requires a power supply. In most cases the light source will be dictated by the shopping centre, natural light or the ambient street light. Art work exhibited at Castlefield Gallery will be covered by their insurers but it may not be possible to insure work exhibited in NAS window spaces.

Opening Times

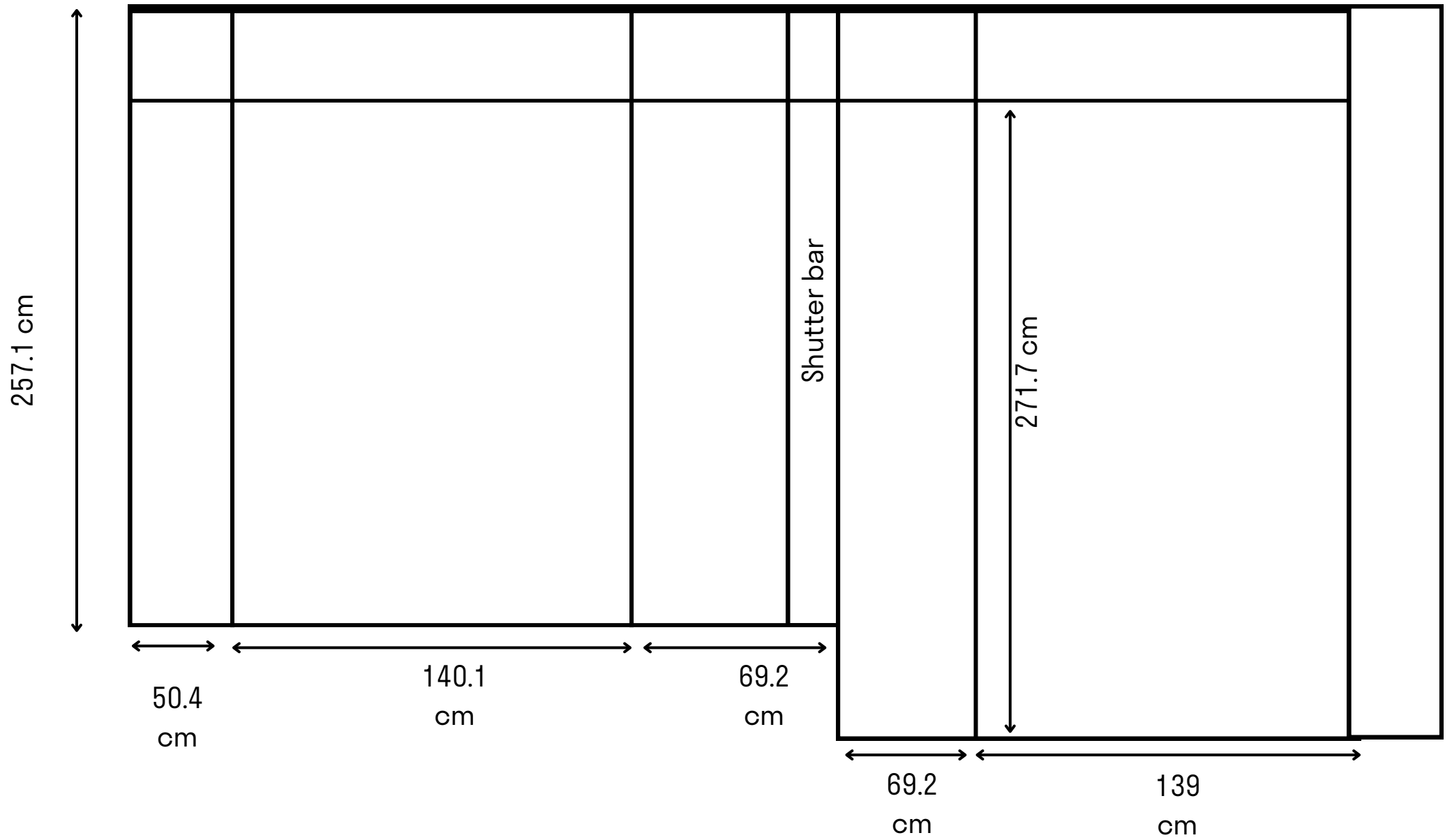
During this exhibition, Castlefield Gallery will be open as usual (Wed - Sun 12-5:30pm). Work exhibited in our double height window space will be visible from the street during these times and visitors will also be able to view the work from inside the gallery. During this period Castlefield Gallery's lower gallery will be occupied by a bespoke installation, which will host a series of events, workshops, presentations, screenings, meals, discussion and other activities to celebrate our 40th anniversary and use the space differently.

Artwork exhibited in the window spaces at Castlefield Gallery New Art Spaces: Warrington will be visible 24 hours a day from Sankey Street street, and New Art Spaces: Chester will be visible during the opening hours of Grosvenor Shopping Centre (9:00am-5:30pm).

Castlefield Gallery

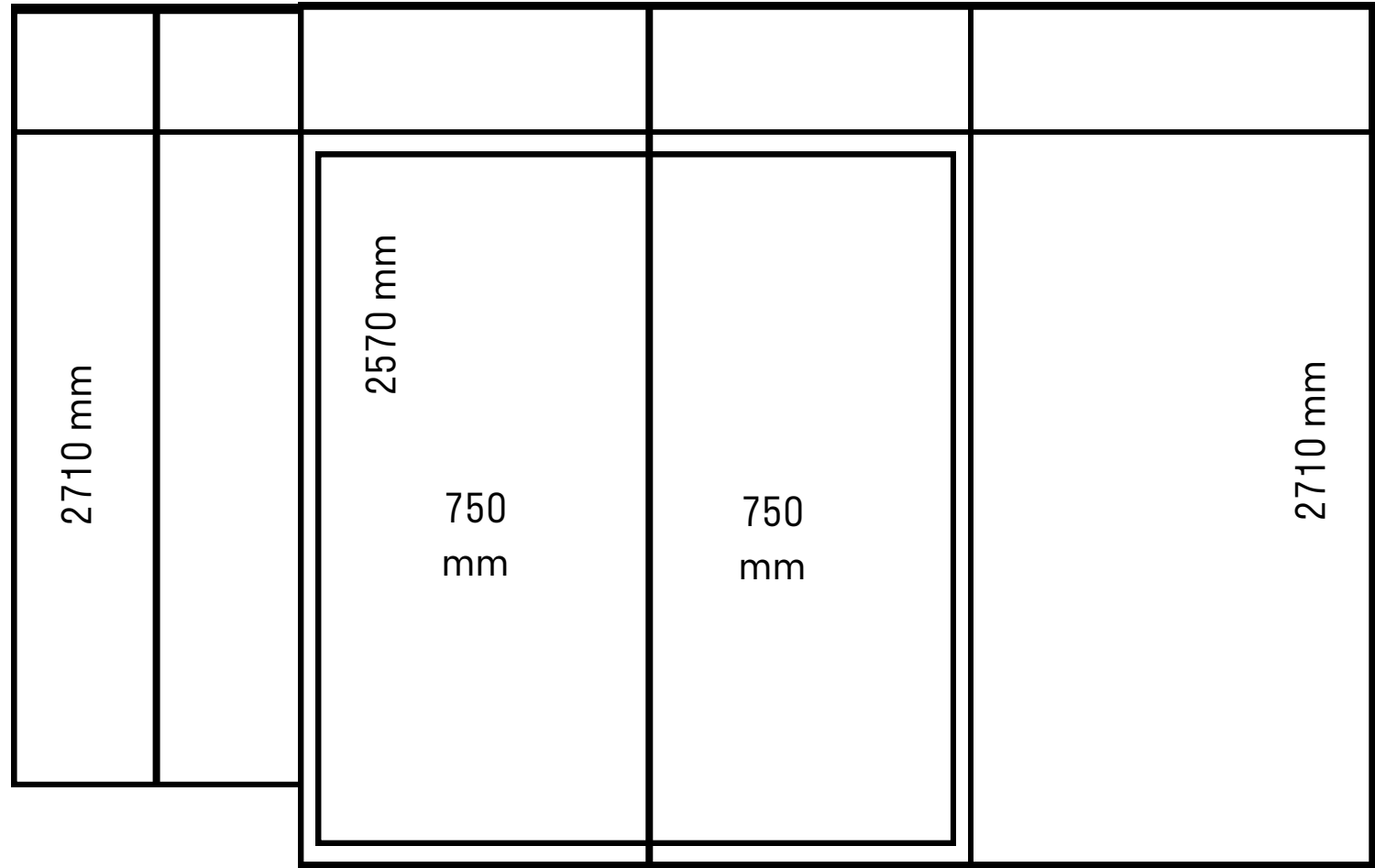
Windows (starting from the left side of the shop window)

Front of Gallery on Hewitt Street



382 mm 382 mm

Side of Gallery

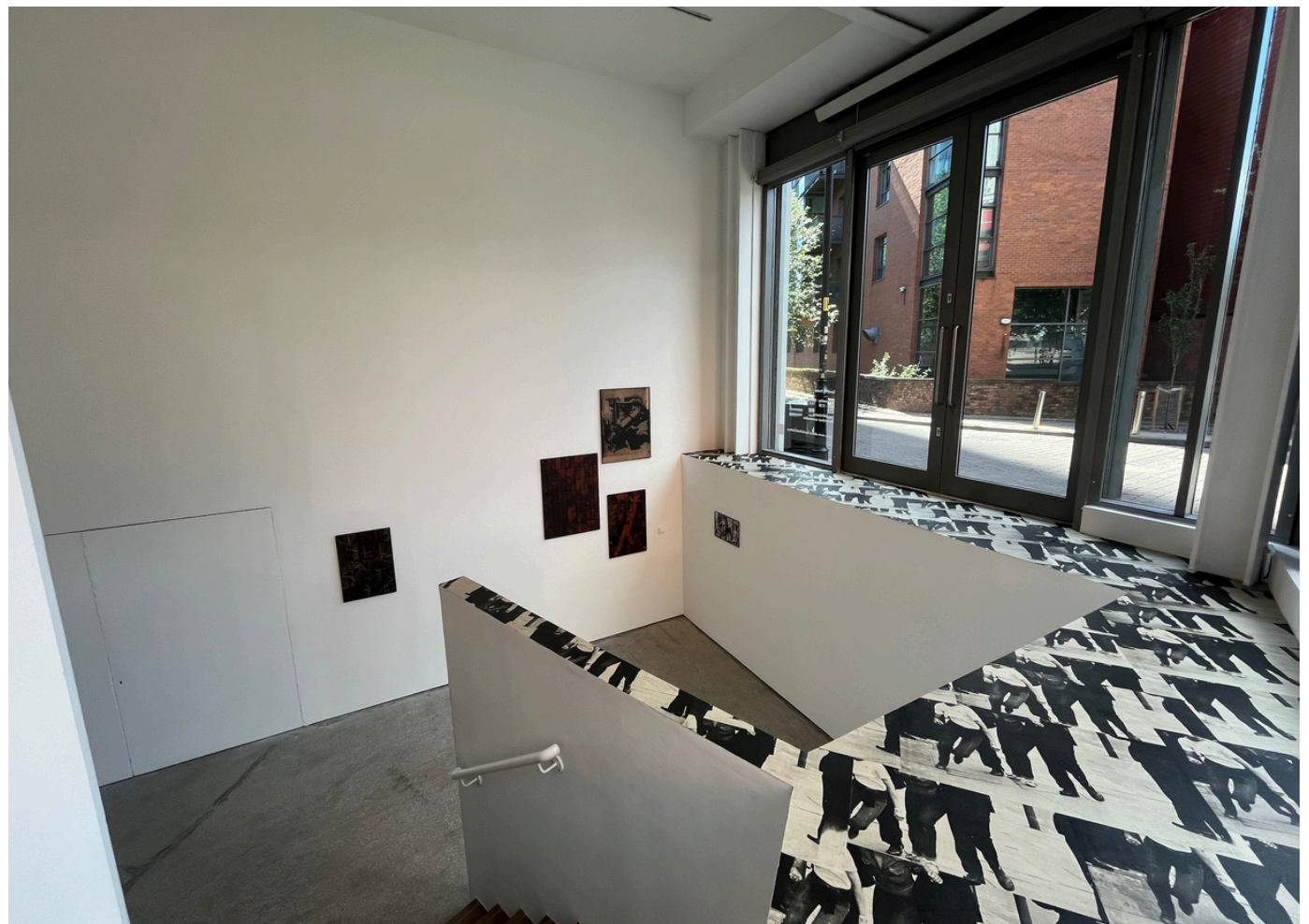
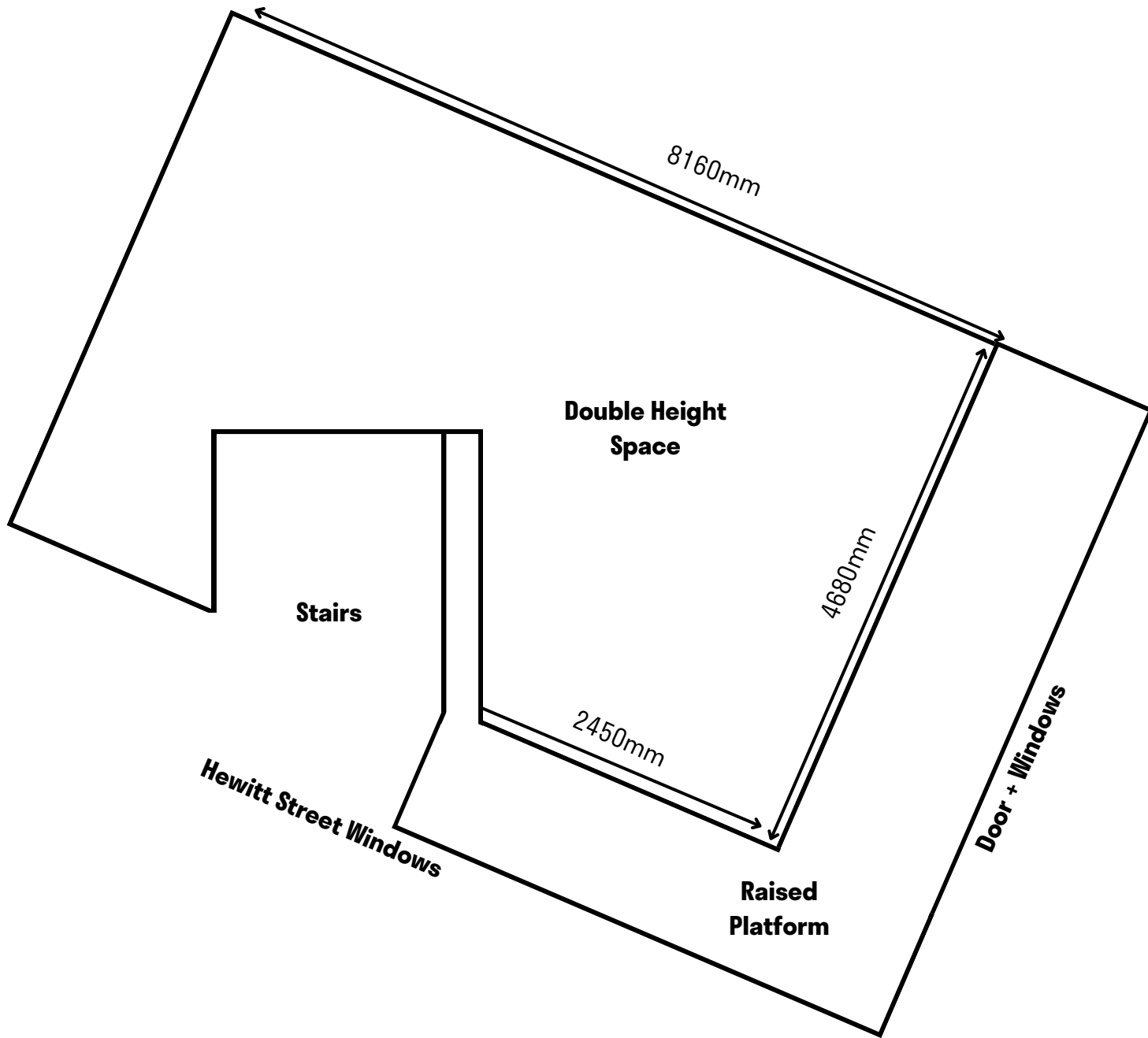


Doors

2000 mm



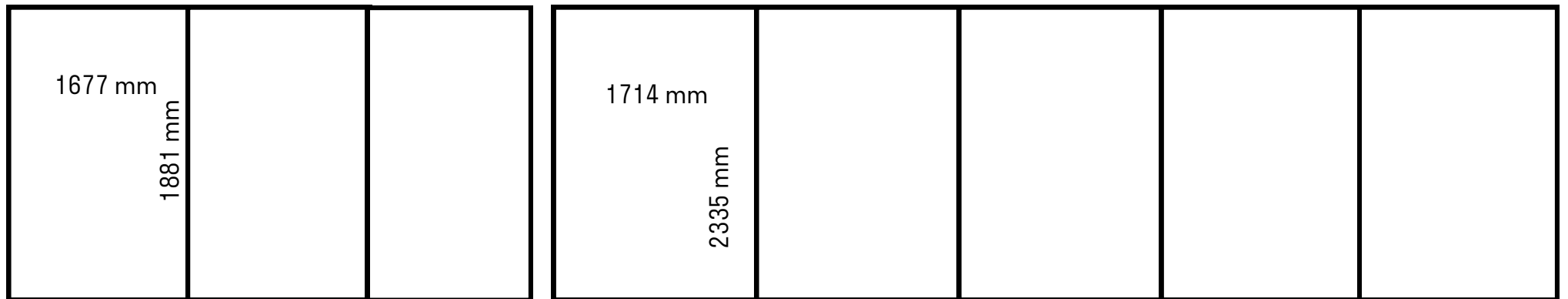
Inside Space ('Double Height Space')



New Art Spaces Warrington

Top of Wall to Floor Length = 2460 mm
Ceiling to floor length = 27620 mm

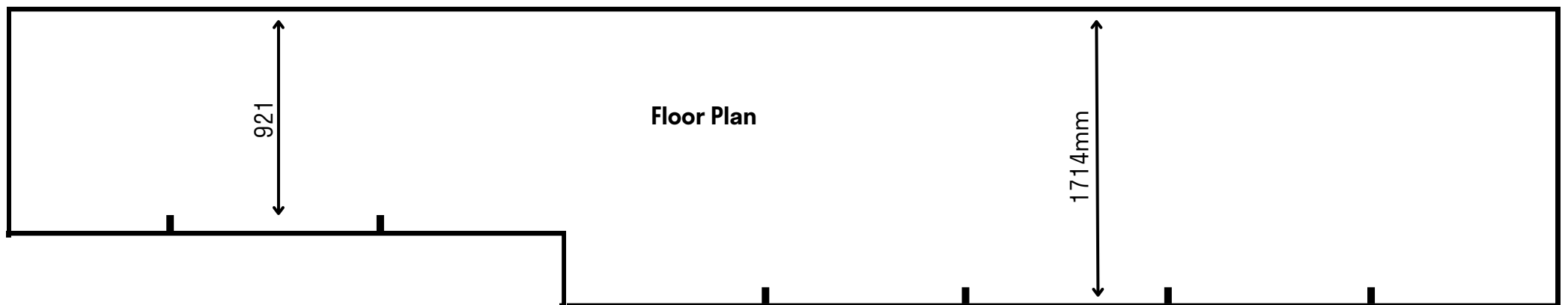
Windows



Windows 1

Windows 2

total wall width 15600mm

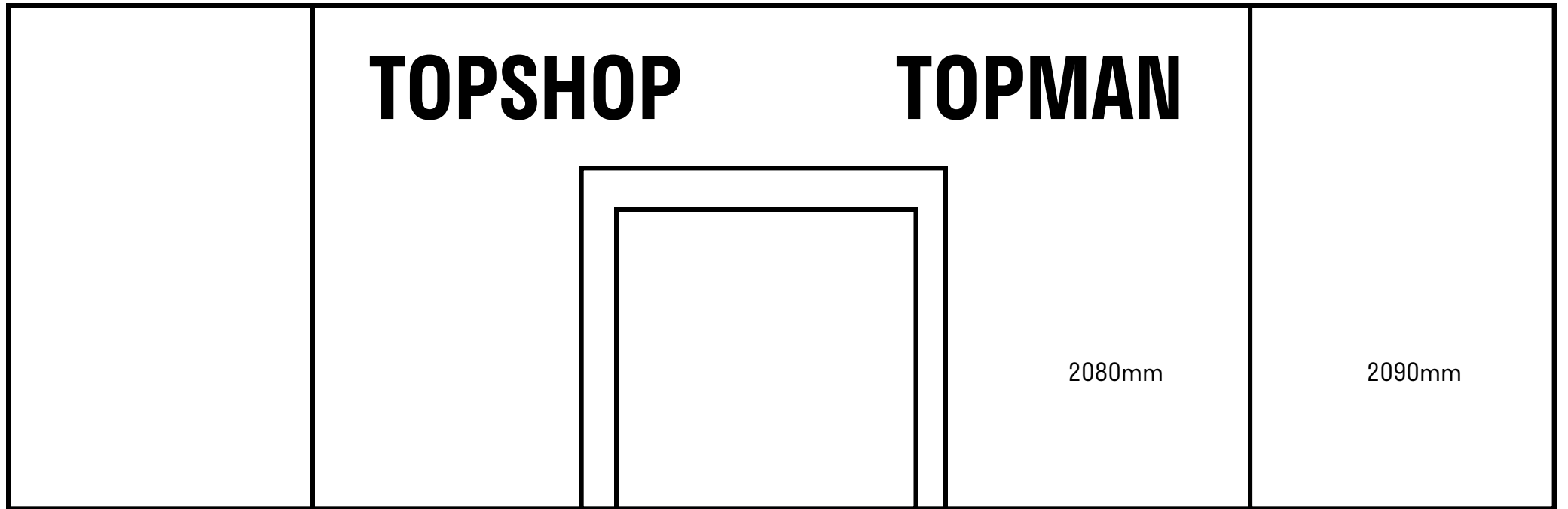


Windows 1

Windows 2



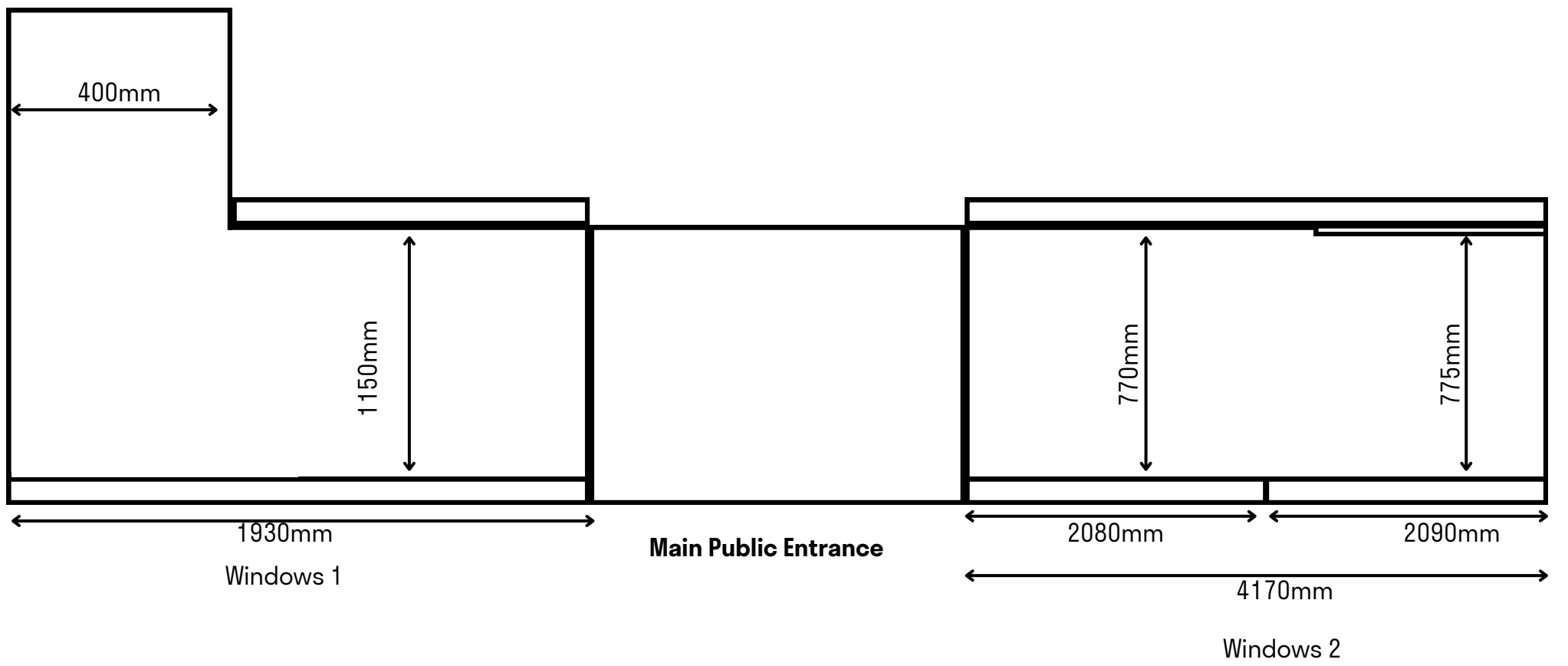
New Art Spaces Chester



1930mm
Windows 1

Main Public Entrance

2090mm
Windows 2



1930mm
Windows 1

Main Public Entrance

2080mm

2090mm

4170mm
Windows 2

