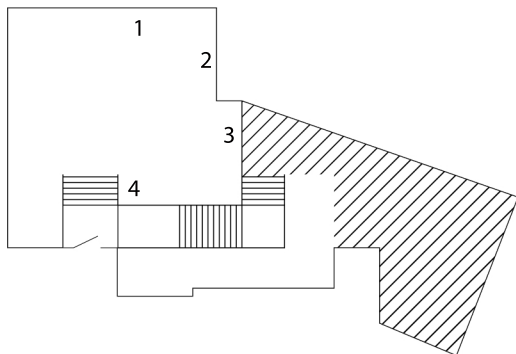


Upper gallery



Upper Gallery

Theo Simpson

1. *Map of horizons portfolio* (Selected content from portfolio in vitrine) (2022)
Ground, milled, drilled and tapped interlocking stainless steel sidewalls / laser cut and countersunk copper panels. Black / stainless steel M3 countersunk machine screw fixings and hex key.

2. *Map of horizons (part 1)* (2024)

Diptych of aluminium mounted hand printed gelatin silver print, bonded in laser cut and pressed 16 – gauge steel chassis

Jeffrey Knopf

3. *The Future Looking to the Past, the Past Looking to the Future (Where Should We be Now?)* (2024)

Wood, paint and 3D printed plastic

4. *Foundation* (2024)

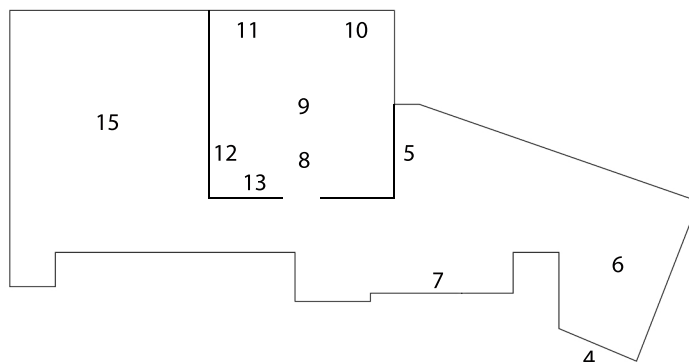
Made in collaboration with Angela Tait
Glass and ceramic

Plan

40 Years of the Future: Where Should We Be Now?

7 July — 6 October 2024

Lower gallery



Lower Gallery

Theo simpson

4. *Ground effects IV* (2024)

Layered and pasted single colour silkscreen prints

5. *Tomorrow. Today.* (2024)

Black adhesive vinyl

6. Left to right, top to bottom:

Ground effects III (2024)

Layered mounted silkscreen prints bonded in laser cut and pressed 16 – gauge steel chassis

Ground effects (2022)

Layered mounted silkscreen prints bonded in laser cut and pressed 16 – gauge steel chassis

Priming (2024)

Single colour silkscreen print mounted on electrolytically coated steel, bonded in laser cut, pressed and powder coated 16 – gauge steel chassis

Remainder III – Stepping Stones (2022)

Layered mounted silkscreen prints / silkscreen printed and lacquered copper bonded in laser cut and pressed 16 – gauge steel chassis

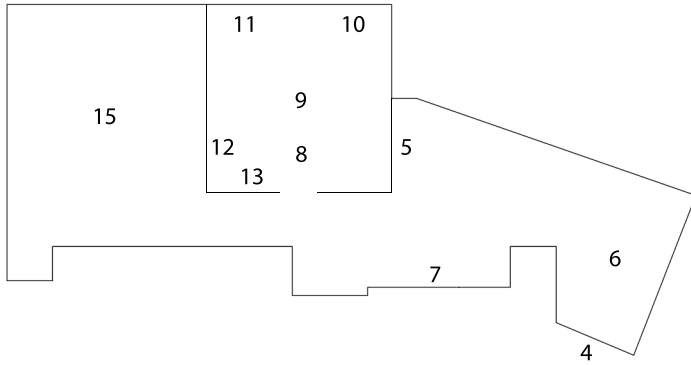
Reverse remainder (2023 - 2024)

Layered mounted archive prints, hand printed gelatin silver prints bonded in laser cut, pressed and painted 18 – gauge steel chassis

Remainder II – Drift (2022)

Layered mounted silkscreen prints / silkscreen printed and lacquered copper bonded in laser cut and pressed 16 – gauge steel chassis

Lower gallery



Lower Gallery

Theo Simpson

7. *Dreams vs Nightmares* (2024)

Layered screen printed / clear coated bright annealed stainless steel / copper panels and aluminium / steel mounted archive prints bonded in laser cut, pressed and painted 18 - gauge steel chassis

Jeffrey Knopf

8. *Couch* (2024)

Collaboration with Steven Calver
Glass and reed diffuser

9. *The Closest I Got to Freud's Desk* (2024)

Steel, glass and 3D printed plastic

10. *Couch 2* (2024)

Collaboration with Emma Lloyd
Glass and Jesmonite

11. *The Light Radiates Out* (2024)

Digital video loop

12. *Now You See Me* (2024)

Digital video loop

13. *Companions* (2024)

Glass and Pewter

Hope Strickland

14. *I'll Be Back!* (2022)

Digital video, archival footage and 16mm film
Commissioned by FACT Liverpool with public funding from Arts Council England and Liverpool City Council. Originally presented in collaboration with Hervisions, supported by The Granada Foundation.
Sound design and composition by Felix Taylor.
10m 58s

Presented in collaboration with the University of Salford Art Collection:

ART
COLLECTION
UNIVERSITY OF SALFORD

40 Years of the Future: Where Should We Be Now? is supported by Castlefield Gallery Commissioning Patrons Prof Chris Klingenberg and Bridget and Richard Schilizzi

Castlefield Gallery Funders and supporters



ARTS COUNCIL
ENGLAND



MANCHESTER
CITY COUNCIL

For sales enquiries please contact
Castlefield Gallery Curator and Deputy Director
Matthew Pendergast
T: 0161 832 8034
matthew@castlefieldgallery.co.uk