

## ***Personal flash in real time (Tony) and Personal flash in real time (Andy)***

2021



Industrial strip lights and light meter

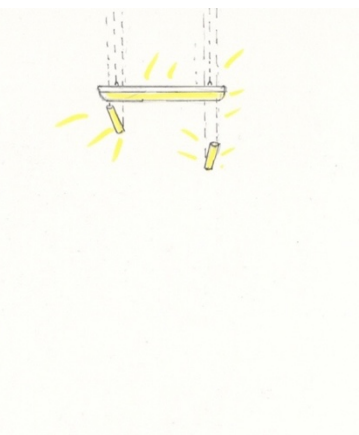
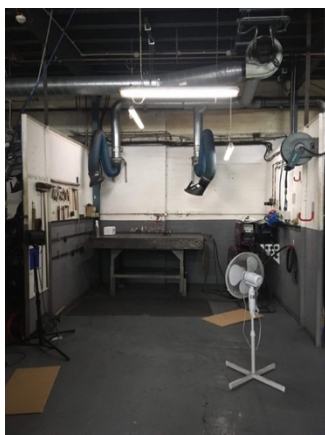
Made by: Andy Bradshaw, Craig Oates, Nicola Ellis and Tony Lowther.

Images courtesy Jules Lister

Two sets of industrial strip lights hanging in the gallery's double height space are connected via Wi-Fi to a pair of light sensors hanging from the ceilings of two welding booths, detecting the 'flash' made by welders at the Ritherdon factory.

At Ritherdon, customer orders inform the workflow management system Seiki, which provides a timeframe in which each welding job should be completed. This work celebrates the welder working within this monitored and structured system by communicating their individual working rhythm in lights. The harsh UV light of the welding process – a barrier separating the individual from the rest of the workplace in the factory context- is translated from something incredibly dangerous and hostile to something communicative.

The light 'data' is transmitted in real time and will only be received in the gallery during the factories working hours (7am – 4pm, Mon-Fri). The work points to the connections, overlap and differences between the factory and the gallery and their respective operating systems. A chart indicating light intensity in both Tony and Andy's booth is visible on the screen in the lower gallery.



Sketch illustrating the position of strip lights in the gallery, mirroring the strip lights in the associated welding booth.