

# 12

## Melanie Manchot *Twelve*

PRESS RELEASE INFORMATION – For Immediate Release

### Touring dates

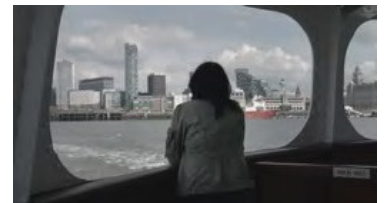
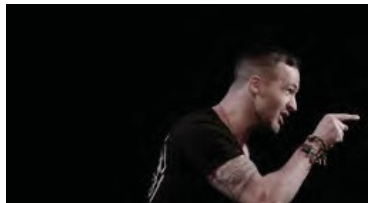
Peckham Platform, London, 22 May – 26 July 2015

**Castlefield Gallery, Manchester, 18 September – 1 November 2015**

Aspex Gallery, Portsmouth, 23 January – 20 March 2016

Towner, Eastbourne, 16 April – 26 June 2016

[www.twelve.org.uk](http://www.twelve.org.uk)



Castlefield Gallery is delighted to present *Twelve*, Melanie Manchot's major new multi channel video installation exploring the intimate stories, rituals, repetitions and ruptures of lives spent in addiction and recovery. Inspired by the visual acuity of renowned contemporary filmmakers, the work connects and collapses individual recollections in which everyday situations, events and activities are rendered dramatic or abstract and infused with tragedy, pathos and humour.

Over the last two years Manchot has worked in dialogue with twelve people in recent recovery from substance misuse, in rehabilitation communities in Liverpool, Oxford and London. *Twelve* is directly informed by their personal written and oral testimonies, creative conceptions, and performances within the final works. Single sequences are shot as continuous takes, referencing iconic scenes from the films of Michael Haneke, Gus van Sant, Bela Tarr and Chantal Akerman – a ferry journey across the Mersey, a darkened room looking out on to an early morning street, a car wash, the cutting of daisies with small scissors, the obsessive cleaning of a floor – providing the framework for reflections on remembered incidents and states of mind.

*Twelve* employs a diversity of cinematic technique and tropes adapted by Manchot to reveal the complex and non-linear nature of recovery. Melanie Manchot is a London based visual artist who works with photography, film, video and installation as part of a performative and participatory practice. Her projects often explore specific sites and public spaces in order to locate notions of individual and collective identities, investigating particular gestures and forms of movement or activities that become the marker of a group or community. Manchot's work has been widely exhibited in galleries, museums and film festivals internationally including at Whitechapel Gallery and The Photographers' Gallery, London; MOCAK Museum of Contemporary Art, Krakow; GoMA, Glasgow; and Portland Institute for Contemporary Art, Oregon.

To coincide with the exhibition at Castlefield Gallery, Manchot has developed a series of workshops with people from the North West in long-term recovery. With the support of The Priory Clinic, the participants are each exploring their experiences in the cycle of addiction and recovery and their reactions to the video work to produce a series of artworks to be shown at poster-sites across Manchester from the 11 September – 2 October 2015.

Commissioned by Portraits of Recovery, Castlefield Gallery is publishing *Twelve*, a publication featuring essays by Gareth Evans, Zoe Pilger, and Sally O'Reilly.

### **Events**

#### **Open Day:**

Informal tours of the *Twelve* exhibition throughout the afternoon.

Saturday 3 October 2015 / 1-6pm

#### **In-conversation: Melanie Manchot and Dr Amanda Ravetz, plus book launch:**

Join Melanie Manchot in-conversation with social anthropologist Dr Amanda Ravetz. The event will also be followed by the official book launch for *Twelve*. Dr Amanda Ravetz is a writer and filmmaker and has a PhD in Social Anthropology. She is based in the research centre MIRIAD at the Manchester School of Art.

Saturday 10 October 2015 / 3-5pm

#### **Art and Recovery: A symposium exploring the relationship between art, addiction and recovery**

Join this debate on the value of art within the addiction & recovery agenda. Speaking at the event will be Clive Parkinson, Director of Arts for Health at MMU, Social Scientist Dr Ali Roy from UCLAN, Zoe Zontou, a Lecturer in Drama at Liverpool Hope University, UKRF founding Director & recovery activist, Alistair Sinclair and founding Director & *Twelve* commissioner, Mark Prest from Portraits of Recovery.

Tuesday 13 October 2015 / 10am-12:30pm

**For further information, to request images or to arrange interviews, please contact: Jennifer Dean, Communications and Audience Development Coordinator on [jennifer@castlefieldgallery.co.uk](mailto:jennifer@castlefieldgallery.co.uk) or call +44 (0)161 832 8034 / 07766046672**

#### **Notes to Editors**

*Twelve*, 18 September – 1 November 2015, **Castlefield Gallery**, 2 Hewitt Street, Manchester, M15 4GB. Admission, free. Open Wednesday – Sunday 1pm – 6pm. The gallery is wheelchair accessible. Telephone 0161 832 8034. [www.castlefieldgallery.co.uk](http://www.castlefieldgallery.co.uk).

*Twelve* tours to major UK galleries through 2015 – 2016 as site-specific installations responding to each gallery environment. In association with *Twelve*, further small commissions by Melanie Manchot addressing addiction and recovery will be produced and presented in partnership with each venue and local recovery communities.

**[www.twelve.org.uk](http://www.twelve.org.uk)**

**Melanie Manchot** studied at the Royal College of Art, London and New York University, USA. Recent solo shows include *Tracer*, BALTIC 39, Newcastle and Oriel Davies, Newtown, Wales (2014); *Leap after The Great Ecstasy*, Carlaw St\*Luke's, London (2013); *The Continuous Still* for Contact Toronto Photography Festival, (2012) and *Celebration* (Cyprus Street), Whitechapel Gallery, London, (2010). Recent group shows include *The Rhythm is...*, Museum Folkwang, Essen, Germany (2014), *When the Grid goes Soft*, MOT, London, UK (2013); *Videonale 14*, Kunstmuseum Bonn, Germany (2013); *Situations*, MAC/VAL Musee d'art contemporaine, Paris, France (2012) as well as *Shave* at 52nd La Biennale di Venezia, Venice, Italy. **[www.melaniemanchot.net](http://www.melaniemanchot.net)**

**Portraits of Recovery** is a visual arts charity, founded by curator, Mark Prest, that engages with art and artists in a wider discourse on the substance misuse recovery agenda. Their vision and intent is to improve the lives of people and communities in recovery by increasing access to cultural opportunity and facilitating contribution to an emergent cultural identity. The work is delivered through local, regional, national and international partnerships; lifelong learning opportunities; research initiatives; and exhibition projects which through their public outcomes,

increases community visibility and supports wider dialogue beyond current clichéd representation.

[www.portraitsofrecovery.org.uk](http://www.portraitsofrecovery.org.uk)

*Twelve* was commissioned by Mark Prest of Portraits of Recovery and developed by Melanie Manchot working with Action on Addiction, the Ley Community and the Psychosocial Research Unit at the University of Central Lancashire. Twelve is financially supported by Small Arts Awards from the Wellcome Trust and Arts Council England through the National Lottery.

**Twelve+ Manchester** was developed with participant support from the Priory Hospital, Altrincham as part of a series of commissions responding to the exhibition tour's local recovery community contexts.

Since its founding in 1984 by artists, **Castlefield Gallery** has been one of Northern England's most active and successful organisations/agencies for developing emerging contemporary artists and practice. Its ambitious curated exhibitions programme responds to national and international trends, promoting artists at key stages of their careers, including subsequent Turner Prize nominees/winners and exhibitors at international festivals. Central to CG's activities is an artist development programme that has launched major commission winning artists.  
[www.castlefieldgallery.co.uk](http://www.castlefieldgallery.co.uk)

**Peckham Platform** is a creative and educational charity. It recently made this transition to independent status away from its founding institution, University of the Arts London. Their vision is that communities can inform and shape their engagement with their locality by working with contemporary visual artists. Their mission is to create meaningful and accessible social arts practice for Peckham and beyond. They provide an expansive platform for different voices and debate; widening the range, scale and ambition to bring contemporary social practice alive. [www.peckhamplatform.com](http://www.peckhamplatform.com)

**Aspex** has a 33-year track record of supporting emerging artists and engaging audiences, through the delivery of a programme of exhibitions, off-site projects and participatory opportunities. Since relocating to the waterfront at Gunwharf Quays in Portsmouth in 2006, the gallery has focused on audience development, and in particular finding ways to meaningfully engage its visitors by facilitating connections with artists and revealing the creative process. Aspex is a National Portfolio Organisation of Arts Council England and is supported by Portsmouth City Council. [www.aspex.org.uk](http://www.aspex.org.uk)

**Towner** (Registered Charity 115676) is an award-winning gallery set in Eastbourne presenting major exhibitions of contemporary and historic visual art, as well as displays from the internationally renowned 4500-strong Towner Collection. The Collection is best known for its modern British art – including the largest and most significant body of work by Eric Ravilious (1903-1942) - and a growing collection of international contemporary art. **Towner** delivers a dynamic associated public programme and learning offer and welcomes more than 120,000 visitors each year, with a strong commitment to inclusive practice and accessibility. On 1 July 2014, **Towner** became an independent charitable Trust, supported by a Board of Trustees, chaired by David Dimbleby. Towner is supported by Eastbourne Borough Council and Arts Council England through its National Portfolio Programme. [www.townereastbourne.org.uk](http://www.townereastbourne.org.uk)

**Images:** Melanie Manchot, *Twelve*, left to right: *The Bronson Monologue*, *The Car Wash*, *Ferry*, multi channel video, dimensions variable, 2015.



**CG is part of Arts Council England's National Portfolio and is a cultural partner of Manchester City Council 2015-18.**